

Graduate
Report

2007

Jill Smith, Director

Career
Development

Contents

Observations from the Data <i>Summary of characteristics of the graduate data</i>	3
Statistics <i>Categorical breakdown the graduates</i>	4
Placement History <i>Historical review of graduate placement</i>	5
Full-time Report <i>Full-time employment & full-time graduate school ONLY</i>	6
Employment Statistics by Major <i>Breakdown of graduates by major</i>	7
Number of Graduates Listed by Employer <i>List of employers and number of graduates employed</i>	11
Graduate Schools <i>List of graduate schools being attended by graduates, duplicates excluded</i>	17
Geographic Distribution of Graduates <i>List of where the graduates are residing</i>	18
Graduates by Degree <i>Specific list of graduates by name and degree – NOT for publication or distribution</i>	22

Observations from the 2007 Graduate Data

In this report, the class of 2007 refers to the 405 respondents of the 411 graduates who completed their graduation requirements during the Taylor University academic year (September 1, 2006 – August 31, 2007) in 2006-2007.

Members of the class of 2007 were successful in achieving employment and graduate school placement in the midst of an ever-increasing competitive post-graduate market. Eighty-seven percent were employed full-time (down from 88% in 2006), attending graduate school, substituting regularly, or continuing in degree-related activities (e.g. ministry, volunteer, and/or international service). Although there is a perceived slight decrease in this summative number (87%), there was an increase in the percentage (as well as in the number) of graduates employed full-time, attending graduate school full-time, and those working part-time. The remaining graduates were identified as either unemployed, or their employment status was “unknown,” or classified as “other.”

A significant fact identified within the Report is the continued interest and increase in graduates attending graduate school full time. Of the 405 graduates responding, 73 (18%) will be pursuing graduate school full-time in 19 states (including Duke University, Vanderbilt University, and Taylor University).

For the second year in a row, Indiana retains the largest number of graduates (129, 32%), with Illinois (70, 17%), Ohio and Michigan at 6% with 24 and 23 graduates residing in those states respectively.

There are a diverse grouping of employers who hire the Taylor graduate. The number of graduates pursuing employment within the not-for-profit sector is increasing. Some of the not-for-profit organizations which have hired more than one Taylor graduate for full-time employment in 2007 include: The Peace Corps (3), Advent Group Ministries (2), Heartland Fellows (2), Word Made Flesh (2) – Although a not-for-profit institution, Taylor University (with 6 hires) was not included in this listing.

Most Taylor University graduates continue in the tradition of entering the workforce in small to medium-size companies.

Procedure

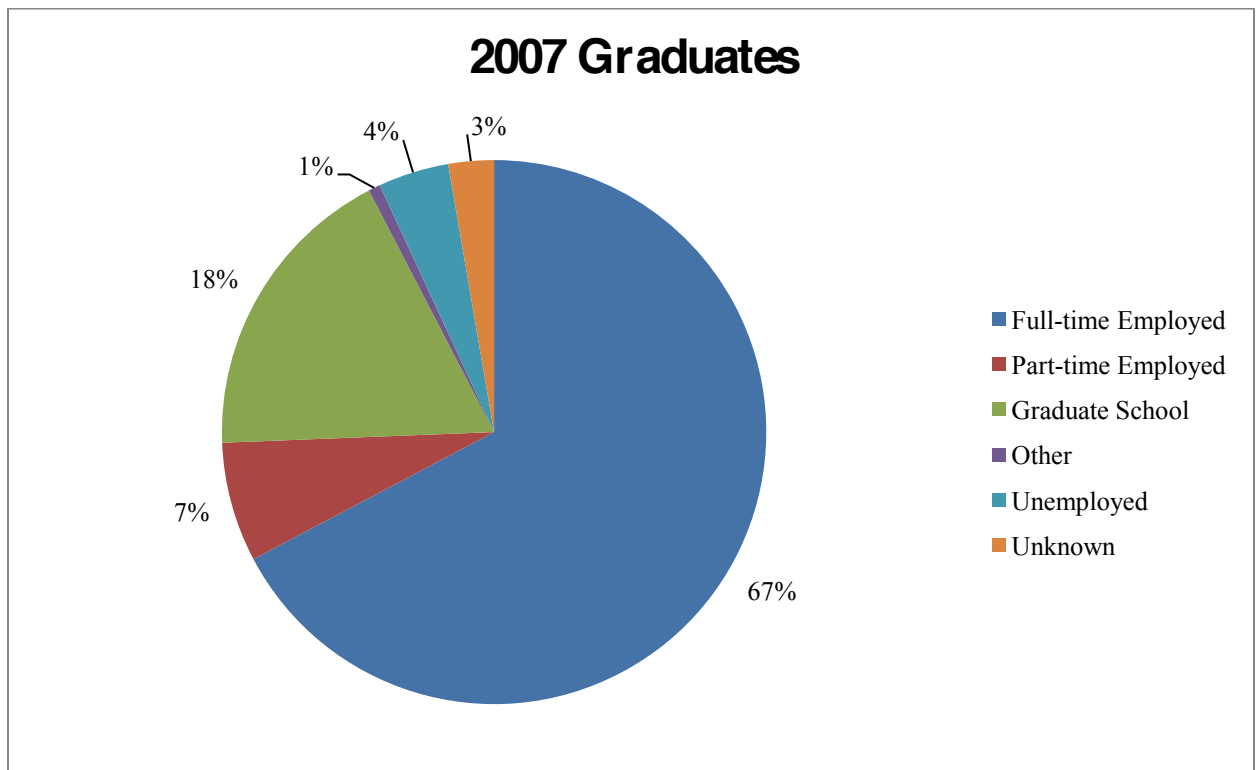
The first step in collecting data from the graduates was a paper survey distributed in May of 2006, during graduation practice. Beyond this initial collection, the Career Development staff (including the use of student Career Planning Assistants, CPAs) utilized numerous secondary collection strategies including phone call solicitation to both the graduate and their parent/s, retrieving posted information from social networking sites (e.g. Facebook, LinkedIn), as well as through email correspondence. Additional leads were identified through current students, “friends,” as well as faculty and staff contacts (e.g. hall directors, coaches).

2007 Overall Statistics

Summary of Upland Graduates

2007

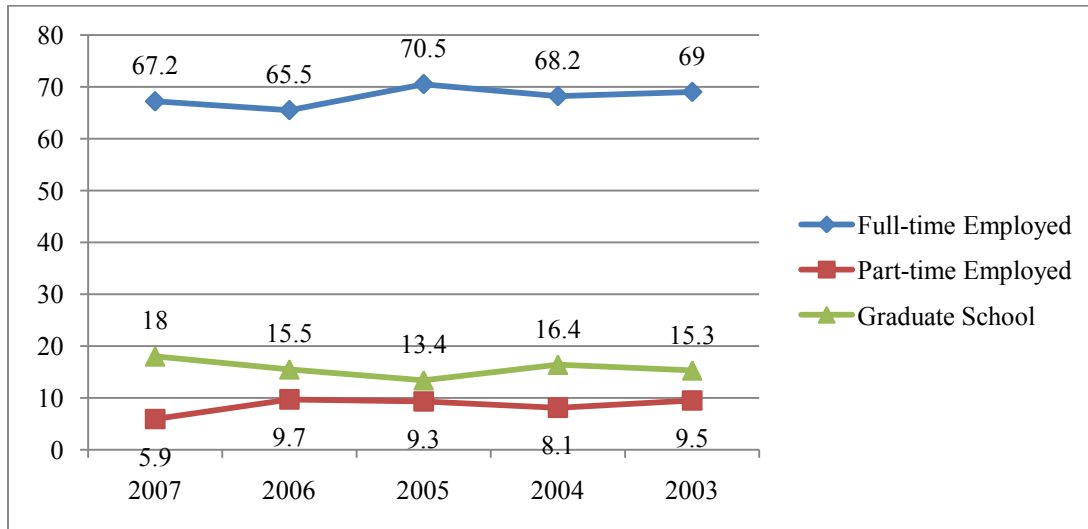
Full-time Employed	67.2%	272
Part-time employed (includes Substitute Teaching, 1.2%)	7.2%	29
Graduate School (full-time)	18.0%	73
Other	0.7%	3
Unemployed	4.2%	17
Unknown	2.7%	11



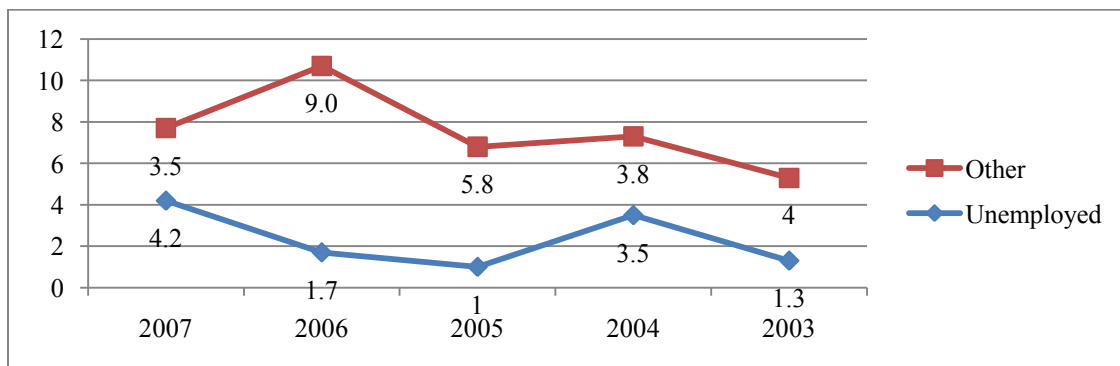
Overall Employment Placement History

2007 – 2003

Based on the number of graduates responding, not degrees conferred.



	<u>2007</u>	<u>2006</u>	<u>2005</u>	<u>2004</u>	<u>2003</u>
<i>Respondents</i>	405	412	396	396	452
<i>Graduates*</i>	426	418	417	406	464
Full-time Employed	272 (67.2)	270 (65.5)	279 (70.5)	270 (68.2)	312 (69.0)
Part-time‡ Employed	24 (5.9)	40 (9.7)	37 (9.3)	32 (8.1)	43 (9.5)
Graduate School	73 (18.0)	64 (15.5)	53 (13.4)	65 (16.4)	69 (15.3)
Unemployed	17 (4.2)	7 (1.7)	4 (1.0)	14 (3.5)	3 (1.3)
Other†	14 (3.5)	37 (9.0)	23 (5.8)	15 (3.8)	18 (4.0)



‡ Part-time also includes Substitute Teaching

† Includes “Other” and “Unknown” categories (missions, travel, service, etc.)

Report includes **ONLY** graduates employed Full-time **or** Attending Graduate School Full-time

<u>Department</u>	Degrees Conferred 2002-2003	2003 Grad Report Respondents	Degrees Conferred 2003-2004	2004 Grad Report Respondents	Degrees Conferred 2004-2005	2005 Grad Report Respondents	Degrees Conferred 2005-2006	2006 Grad Report Respondents	Degrees Conferred 2006-2007	2007 Grad Report Respondents
Art	14	6	16	6	9	4	19	6	19	11
Bib Lit,Chrst Ed Min, Phil	46	36	34	29	36	27	36	33	41	26
Biology	16	14	19	13	22	16	17	18	25	22
Buisness	85	81	78	78	75	63	56	42	69	55
Chemistry and Biochemistry	6	6	4	4	3	1	3	2	3	3
Communication Studies	41	37	20	6	39	33	33	37	25	25
Computing and Systems	32	33	47	34	35	35	30	19	15	14
Earth and Environmental Sci	6	4	2	2	2	3	3	0	3	2
Economics†	X	X	X	X	X	X	X	X		1
Elementary Ed.	46	46	33	29	43	34	38	31	44	39
English	27	11	19	8	22	12	18	7	20	18
Goal Oriented	1	2	3	2	1	0	0	0	2	0
Geography	0	0	0	0	0	0	0	0	1	1
History	17	13	43	10	24	7	25	13	32	25
Mathematics	12	6	8	4	10	2	8	1	13	10
Modern Languages	6	4	5	2	2	0	4	0	6	6
Music	13	8	10	7	7	4	8	5	13	7
PHP*	18	7	9	4	12	8	19	12	21	14
Physics	7	7	5	5	5	4	15	12	7	5
Political Science	4	4	7	6	4	3	8	5	3	3
Psychology	45	40	29	25	51	37	44	36	45	45
Secondary Education†		38		31		29		30		
Social work	18	14	10	12	12	10	12	19	12	7
Sociology	4	3	5	4	3	2	3	2	7	5
	464	420	406	321	417	334	399	330	426	344

Employment Statistics

**2007
UPLAND CAMPUS**

<i>Country / State</i>	<i>Full-Time Employment</i>	<i>Part-Time Employment</i>	<i>Graduate School</i>	<i>Other</i>	<i>Substitute Teaching</i>	<i>Unemployed</i>	<i>Unknown</i>	<i>Total</i>
Accounting	2	0	0	0	0	0	0	2
Art	3	1	1	0	0	0	0	5
Art Education	5	1	0	0	0	0	0	6
Bible, Christian Educ Ministries	1	0	0	0	0	0	0	1
Biblical Literature	3	1	3	0	0	2	0	9
Biblical Literature/Systems	1	0	0	0	0	0	0	1
Biology	7	1	15	0	0	1	1	24
Biology Science Education	0	0	0	0	0	0	1	0
Business, Management	1	0	0	0	0	0	0	1
Business, Music	1	0	0	0	0	0	0	1
Chemistry	1	0	1	0	0	0	0	2
Chemistry Education	1	0	0	0	0	0	0	1
Christian Educ Ministries	8	2	3	0	0	1	0	14
Christian Educ Ministries,	0	0	1	0	0	0	0	1
Christian Education	1	0	0	0	0	0	0	1
Communication Studies	11	0	0	0	0	1	0	12
Communication-New Media	3	1	0	0	0	0	0	4
Computer Engineering	1	0	1	0	0	0	0	2
Computer Engineering/Systems	1	0	0	0	0	0	0	1

Employment Statistics (cont.)

**2007
UPLAND CAMPUS**

<i>Country / State</i>	<i>Full-Time Employment</i>	<i>Part-Time Employment</i>	<i>Graduate School</i>	<i>Other</i>	<i>Substitute Teaching</i>	<i>Unemployed</i>	<i>Unknown</i>	<i>Total</i>
Computer Graphic Arts	1	0	0	0	0	0	0	1
Computer Science	1	0	0	0	0	0	0	1
Computer Science/Systems	9	1	1	0	0	0	0	11
Early Childhood Education	1	0	0	0	0	0	0	1
Economics	1	0	0	0	0	0	0	1
Elementary Education	38	2	0	0	3	0	1	43
Engineering Physics	3	0	0	0	0	0	0	3
English	8	1	2	0	0	1	1	12
English Education	6	1	0	0	0	0	0	7
English, Philosophy	2	0	0	0	0	0	0	2
Environmental Biology	1	1	1	0	0	0	0	3
Exercise Science	5	0	2	0	0	1	0	8
Exercise Science, Psychology	1	0	0	0	0	0	0	1
Finance	4	0	1	0	0	1	0	6
French Education	1	0	0	0	0	0	0	1
Geography	1	0	0	0	0	0	0	1
Health & Physical Education	1	1	0	0	0	0	0	2
History	5	0	2	0	0	0	0	7
International Business	3	0	0	0	0	1	0	4

Employment Statistics (cont.)

**2007
UPLAND CAMPUS**

<i>Country / State</i>	<i>Full-Time Employment</i>	<i>Part-Time Employment</i>	<i>Graduate School</i>	<i>Other</i>	<i>Substitute Teaching</i>	<i>Unemployed</i>	<i>Unknown</i>	<i>Total</i>
International Studies	6	0	2	0	0	1	1	9
Management	19	0	3	0	0	2	0	24
Management/Systems	7	0	2	0	0	1	0	10
Marketing	8	0	0	0	0	0	0	8
Marketing/Systems	4	0	0	0	0	0	0	4
Mass Communication/Journalism	4	1	0	0	0	0	0	5
Mathematics	1	0	1	0	0	0	0	2
Mathematics Education	7	1	0	0	1	0	1	9
Mathematics-Interdisciplinary	1	0	0	0	0	0	0	1
Music	1	1	4	0	0	0	1	6
Music Education	2	1	0	0	1	0	0	4
Philosophy	2	0	3	0	0	0	1	5
Philosophy, Political Science	0	1	0	0	0	0	0	1
Physics	2	0	0	0	0	0	0	2
Physics/Mathematics Education	0	0	0	1	0	0	0	1
Political Science	3	0	1	0	0	0	0	4
Psychology	29	1	17	1	0	2	3	50
Social Studies Education	8	1	2	1	0	0	0	12
Social Work	6	1	1	0	0	0	0	8

Employment Statistics (cont.)

**2007
UPLAND CAMPUS**

Country / State	Full-Time Employment	Part-Time Employment	Graduate School	Other	Substitute Teaching	Unemployed	Unknown	Total
Sociology	4	1	1	0	0	0	0	6
Spanish	1	0	1	0	0	0	0	2
Spanish Education	3	0	0	0	0	0	0	3
Sport Management	4	0	1	0	0	1	0	6
Theatre Arts	1	0	0	0	0	0	0	1
Visual Arts-New Media	6	1	0	0	0	1	0	8
Total	272	24	73	3	5	17	11	405
	67.2%	5.9%	18.0%	0.7%	1.2%	4.2%	2.7%	

Number of Graduates Listed by Employer

2007
UPLAND CAMPUS

Employer	Full-Time	Part-Time	Total
360 Architecture	1	0	1
A			
Accion USA	1	0	1
Acclarent Inc.	1	0	1
Advanced Micro Devices	1	0	1
Advent Group Ministries	2	0	2
American Apparel	1	0	1
American Transmission Company	1	0	1
Americorps	1	0	1
An Tobar Nua (a coffee house ministry)	2	0	2
Apple	2	0	2
Applebees	0	1	1
AstraZeneca Pharmaceuticals	1	0	1
Auto Owners Insurance Co.	1	0	1
B			
Ball Memorial Hospital	3	0	3
Baxter Healthcare	1	0	1
Baxter Pharmaceuticals	1	0	1
Baylor University	0	1	1
Bear Lake Ministries	1	0	1
Ben Davis High School	1	0	1
BestCompanies AZ	1	0	1
Besummit Academy	1	0	1
Big Brothers Big Sisters of America	1	0	1
Biomet	1	0	1
BKD LLP	1	0	1
Black Forest Academy	1	0	1
Blackford County School System	0	1	1
BlueCross BlueShield	1	0	1
Boaz Project	1	0	1
Boston Trinity Academy	1	0	1
Bowen Center	1	0	1
Brandtrust	1	0	1
Bridge	0	1	1
Burke, Inc.	1	0	1
C			
Camp Roger	0	1	1
Career Education Corporation	1	0	1
Carmel Clay Public Library	1	0	1
Carolina Foret Community Center	1	0	1
Cast-Crete	1	0	1
Center Grove Middle School Central	1	0	1
Charis Healthcare	1	0	1
Charlotte- Mecklenburg School District	2	0	2

**Number of Graduates Listed by Employer
(cont.)**

2007

UPLAND CAMPUS

Employer	Full-Time	Part-Time	Total
Chicago Tribune	1	0	1
Charstar	1	0	1
City of Santa Rosa	1	0	1
City Securities Corp.	1	0	1
Clermont County Children Services	1	0	1
Cobb County Library	0	1	1
Colerain High School	1	0	1
Community First Fund	1	0	1
Concord High School	1	0	1
Council Bluffs Community Schools	1	0	1
Crate and Barrel	1	0	1
Crown Motors	1	0	1
Cumberland County Schools	1	0	1
Cummins Engine	1	0	1
D			
Dalit Freedom Network	2	0	2
David's Bridal	1	0	1
Dayton Christian School	1	0	1
Delaware Community Schools	1	0	1
Deloitte & Touche	1	0	1
Development Services	1	0	1
Discovery Bay Games	1	0	1
DRAFTFCB	1	0	1
E			
Edifice Information Management	1	0	1
Einsteins Bagels	1	0	1
ELIC	1	0	1
Exodus Refugee Immigration Inc.	1	0	1
F			
Family Christian Store	1	0	1
Family Research Council	1	0	1
First Presbyterian Church of Fresno	1	0	1
First Steps	1	0	1
Fischer Elementary	1	0	1
Fix Cafe	1	0	1
Fortress	1	0	1
Franklin Central High School	1	0	1
G			
Gary Elementary	1	0	1
Gaylord Entertainment	1	0	1
Generations of Hope	1	0	1

**Number of Graduates Listed by Employer
(cont.)**

2007

UPLAND CAMPUS

Employer	Full-Time	Part-Time	Total
Glen Eyrye Conference Center	0	1	1
Glen H Johnson Construction	0	1	1
Glenbrook South High School	1	0	1
Gospel Communication International	1	0	1
Grant-Blackford Mental Health- Cornerstone	1	0	1
Grove Elementary School	1	0	1
GSA (General Service Administration)	1	0	1

H

Harbor Area Early Intervention of North Suffolk Mental	1	0	1
Hard Rock Concrete	1	0	1
Harold Zeigler Chrysler Dodge Jeep	1	0	1
Headstart Program	1	0	1
Heartland Fellows	2	1	3
Heritage Christian Elementary School	1	0	1
Heritage Web Solutions	0	1	1
Hertz	1	0	1
His House Children's Home	1	0	1
Holtcraft Family	1	0	1
Homestead High School	1	0	1
Horizon Christian School	2	0	2
Hylant Group	1	0	1

I

IDIZ Inc.	1		
Indian Springs Middle School	1	0	1
Indiana Department of Environmental Science	1	0	1
Indiana Tech	1	0	1
Interactive Intelligence	1	0	1
International Justice Mission	1	0	1
International School of Tegucigalpa	1	0	1
International Schools	1	0	1
International Teams	1	0	1
Intervarsity Christian Fellowship	1	0	1

J

J.R. Reynolds Electric	1	0	1
Jay Schools	1	0	1
Jean Stoffer Design, Ltd.	1	0	1
JH Ranch	1	0	1
JP Morgan	1	0	1

K

Kelly Scientific Resources	2	0	2
King's Academy	1	0	1

**Number of Graduates Listed by Employer
(cont.)**

2007

UPLAND CAMPUS

Employer	Full-Time	Part-Time	Total
L			
LA Galaxy	1	0	1
Lake Crescent Lodge	1	0	1
Lake Michigan Credit Union	1	0	1
Lakota Union Schools	1	0	1
Lansing Christian School	1	0	1
Larimer County District Attorney's Office	1	0	1
Leadership Development Incorporated and International	1	0	1
Lifeline Youth and Family Services	1	0	1
Lifetime Fitness	1	0	1
Livingstone Corp.	1	0	1
Longview High School	1	0	1
Los Altos Christian School	1	0	1
M			
MacNeal Hospital	2	0	2
Magill Elementary	1	0	1
Manchester Tool & Die, Inc.	1	0	1
Maniac Magazine	1	0	1
Mechdyne Corporation	1	0	1
Mennonite Central Community	1	0	1
Michigan State University	0	1	1
Mosaic Community Development	1	0	1
Motorola	1	0	1
MSD of Lawrence Township	1	0	1
N			
Neighborhood Christian Legal Clinic	1	0	1
Neoti Broadcasting Network	1	0	1
Neuqua Valley High School	2	0	2
Newport Hospital	1	0	1
Noblesville High School	1	0	1
North View Elementary	1	0	1
Northern Mutual	1	0	1
Northway Community Church	1	0	1
Norwegian Cruise Lines America	1	0	1
O			
OFPOS	0	1	1
Ohio Christian University	1	0	1
Oil City Middle School	1	0	1
OMS International	1	0	1
Operation Mobilization	1	0	1

**Number of Graduates Listed by Employer
(cont.)**

2007

UPLAND CAMPUS

Employer	Full-Time	Part-Time	Total
P			
Pacifica Christian High School	1	0	1
Paladin Media Group	1	0	1
Peace Corps	3	0	3
Pendergast School District	1	0	1
Phoenix of New Orleans	1	0	1
Pill Box	1	0	1
Pilot Galvanizing	1	0	1
Pinewood Middle School	1	0	1
Plamondon Elementary School	1	0	1
Pond Elementary	1	0	1
Pouling County High School	1	0	1
Principal Financial Group	1	0	1
Protrans International	1	0	1
Providence Landscaping, LLL	1	0	1
Q			
Quakerdale	1	0	1
Quarasan	1	0	1
R			
RDV Corporation	1	0	1
Red Robin	1	0	1
Reward Wall Systems	1	0	1
Riverview Elementary	1	0	1
Royal Oak Farm Orchard	1	0	1
S			
Salem Christian School	1	0	1
Sample News Group	1	0	1
Sam's Club	0	1	1
Sand Creek Elementary	1	0	1
Saxby's Coffee Shop	1	0	1
School District 41	1	0	1
Seattle Pacific University	1	0	1
Second Chance Animal Rescue	1	0	1
Senscia	1	0	1
Somerset CPAs	1	0	1
Southern Middle School	1	0	1
Southwestern	1	0	1
Speedway Jr. High	1	0	1
St. John's Mercy Medical Center	0	1	1
Star Com	1	0	1
Starbucks	3	1	4
State Senator Randall M. Hullgren, 48th district of IL	1	0	1

**Number of Graduates Listed by Employer
(cont.)**

2007
UPLAND CAMPUS

Employer	Full-Time	Part-Time	Total
S			
Sylvan Learning Center	1	0	1
Systee Conveyor	1	0	1
T			
Target	1	1	2
Taylor University	6	0	6
TeleTracking	1	0	1
Texas Road House	1	0	1
The Abbey (coffee shop)	1	0	1
The Advisory Board Company	1	0	1
The Crossing	1	0	1
The Deli	1	0	1
The Revere Group	4	0	4
The Royal Buying Group	1	0	1
The Vail Academy	1	0	1
The Vanguard Group	0	1	1
The World Race (www.theworldrace.org)	1	0	1
Tippecanoe School Corporation	0	1	1
Tom Jones Company	1	0	1
Torrence Creek Elementary	1	0	1
Tree of Life	1	0	1
Tyndale House Publishers	1	0	1
U			
Union Elementary	1	0	1
United Airlines' World Headquarters	1	0	1
United States Marine Corps	1	0	1
United States Postal Service	1	0	1
University Christian Church	1	0	1
Urban Ventures	1	0	1
V			
Villa Heights Academic Center	1	0	1
W			
Wabash High School	1	0	1
Wabash Middle School	1	0	1
Walter 6 Byers Elementary	1	0	1
Wawasee High School	1	0	1
Wells High School	1	0	1
WELS Kingdom Workers	1	0	1
Wesleyan Publishing	1	0	1
Wheaton Academy	1	0	1

**Number of Graduates Listed by Employer
(cont.)**

2007
UPLAND CAMPUS

Employer	Full-Time	Part-Time	Total
W			
Wheaton Sport Center	1	0	1
Whites Institute	1	0	1
Whitley Public Library	1	0	1
Word Made Flesh	2	0	2
World Hope International	1	0	1
World Impact	1	0	1
Y			
Youth for Christ	2	0	2
Z			
zzzEspresso Espresso	1	0	1
Employer Not Specified	29	4	26
	272	24	288
<i>Number of Employers:</i>	234		

Graduate Schools attended by
2007 Taylor University Graduates

Azusa Pacific University	Shenandoah University
Ball State University	Southwestern Seminary
Baylor University	St. Louis University
Chicago - Kent	Syracuse School of Philosophy
Chicago School of Professional Psychology	Taylor University
Covenant Theological Seminary	Taylor University Fort Wayne
Des Moines University	Trinity Evangelical Divinity School
Duke University	Trinity International University
Eastern University	University of North Carolina - Charlotte
Gordon-Conwell Theological Seminary	University of Chicago
Grand Valley State University	University of Denver
Huntington University	University of Illinois
Indiana University	University of Indianapolis
Indiana University School of Medicine	University of Kentucky
Indiana Wesleyan University	University of Missouri
IUPUI	University of North Carolina-Greensboro
Lake Erie College	University of Richmond
Mars Hill	University of St. Francis
Michigan State	University of Toledo
Midwestern University	University of Wisconsin-Madison
Montana State University	Vanderbilt University
The Ohio State University	Washington University in St. Louis
Ohio University	Wheaton College
Purdue University	Wright State University
Reformed Theological Seminary	Zionsville Fellows Program

GEOGRAPHIC DISTRIBUTION OF 2007 GRADUATES

**2007
UPLAND CAMPUS**

Country / State	Full-Time Employment	Part-Time Employment	Graduate School	Other	Substitute Teaching	Unemployed	Unknown	Total
Alabama	1	0	0	0	0	0	0	1
Arizona	2	0	0	0	0	1	0	3
California	11	0	1	1	0	1	0	14
Colorado	7	1	1	0	0	1	0	10
District of Columbia	5	1	0	0	0	0	0	6
Florida	4	0	1	0	0	0	0	5
Georgia	5	1	0	0	0	0	0	6
Hawaii	1	0	0	0	0	0	0	1
Illinois	47	4	11	0	1	5	2	70
Indiana	88	5	30	0	1	2	3	129
Iowa	3	0	1	0	0	0	0	4
Kansas	2	0	0	0	0	0	0	2
Kentucky	0	0	2	0	0	1	0	3
Louisiana	1	0	0	0	0	0	0	1
Maryland	1	0	0	0	0	0	0	1
Massachusetts	4	0	1	0	0	0	0	5
Michigan	13	4	2	0	1	1	2	23
Minnesota	1	0	0	0	0	0	0	1
Missouri	1	1	3	0	1	0	0	6

GEOGRAPHIC DISTRIBUTION OF 2007 GRADUATES

***2007
UPLAND CAMPUS***

<i>Country / State</i>	<i>Full-Time Employment</i>	<i>Part-Time Employment</i>	<i>Graduate School</i>	<i>Other</i>	<i>Substitute Teaching</i>	<i>Unemployed</i>	<i>Unknown</i>	<i>Total</i>
Montana	0	0	1	0	0	0	0	1
Nebraska	4	0	0	0	0	0	0	4
New Jersey	1	0	0	0	0	0	0	1
New Mexico	1	0	0	0	0	0	0	1
New York	2	0	0	0	0	0	1	3
North Carolina	8	1	3	0	0	1	0	13
Ohio	14	2	5	0	0	2	1	24
Oregon	0	0	0	0	0	0	1	1
Pennsylvania	10	1	2	0	1	1	0	15
South Carolina	2	0	0	0	0	0	0	2
Tennessee	5	1	2	0	0	0	0	8
Texas	1	1	2	0	0	0	0	4
Unknown	0	0	0	0	0	0	1	1
Virginia	2	1	2	0	0	0	0	5
Washington	3	0	1	0	0	0	0	4
West Virginia	1	0	0	0	0	0	0	1
Wisconsin	3	0	2	0	0	1	0	6
Bolivia	1	0	0	0	0	0	0	1
China	2	0	0	0	0	0	0	2

GEOGRAPHIC DISTRIBUTION OF 2007 GRADUATES

**2007
UPLAND CAMPUS**

Country / State	Full-Time Employment	Part-Time Employment	Graduate School	Other	Substitute Teaching	Unemployed	Unknown	Total
England	2	0	0	0	0	0	0	2
Germany	1	0	0	0	0	0	0	1
Honduras	3	0	0	0	0	0	0	3
India	1	0	0	0	0	0	0	1
Ireland	3	0	0	0	0	0	0	3
Kenya	0	0	0	1	0	0	0	1
Morocco	1	0	0	0	0	0	0	1
Nepal	1	0	0	0	0	0	0	1
South Africa	2	0	0	0	0	0	0	2
Spain	1	0	0	0	0	0	0	1
Tanzania	0	0	0	1	0	0	0	1
Total	272	24	73	3	5	17	11	405
	67.2%	5.9%	18.0%	0.7%	1.2%	4.2%	2.7%	